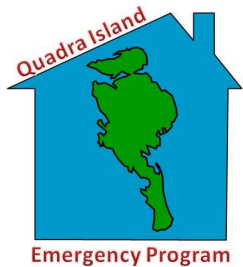




Quadra Island Emergency Program

*Rural Islands Economic Partnership
Connection Café*

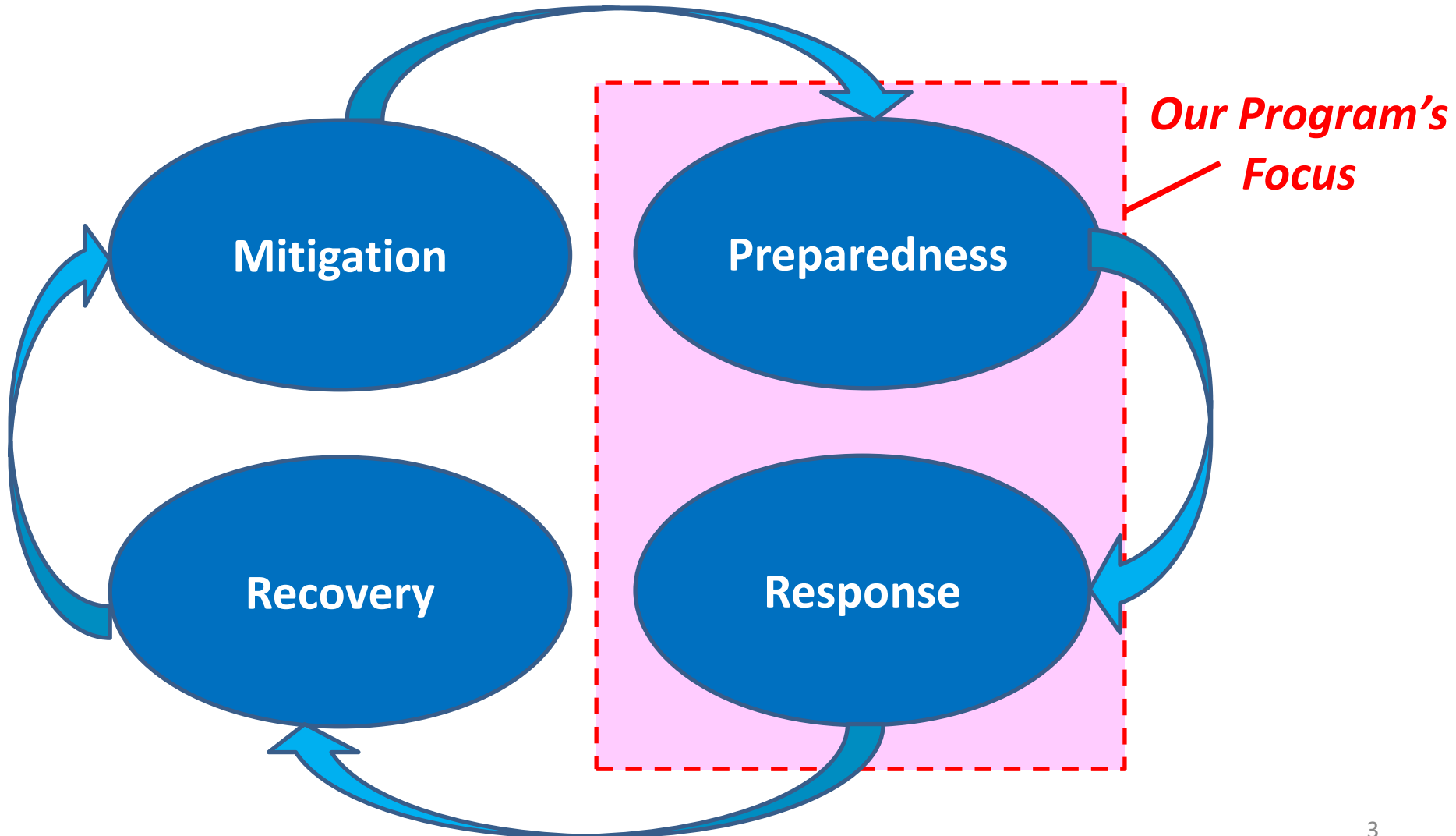


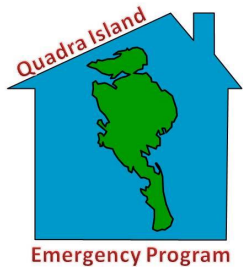
Primary Hazards in BC

- Earthquake
- Tsunami
- Volcanic Eruption
- Wildfire
- Flood
- Drought
- Severe Weather / Storm Surge
- Hazardous Material Event
- Oil Spill
- Dam Breach
- Pandemic
- Terrorism



Phases of Emergency Management



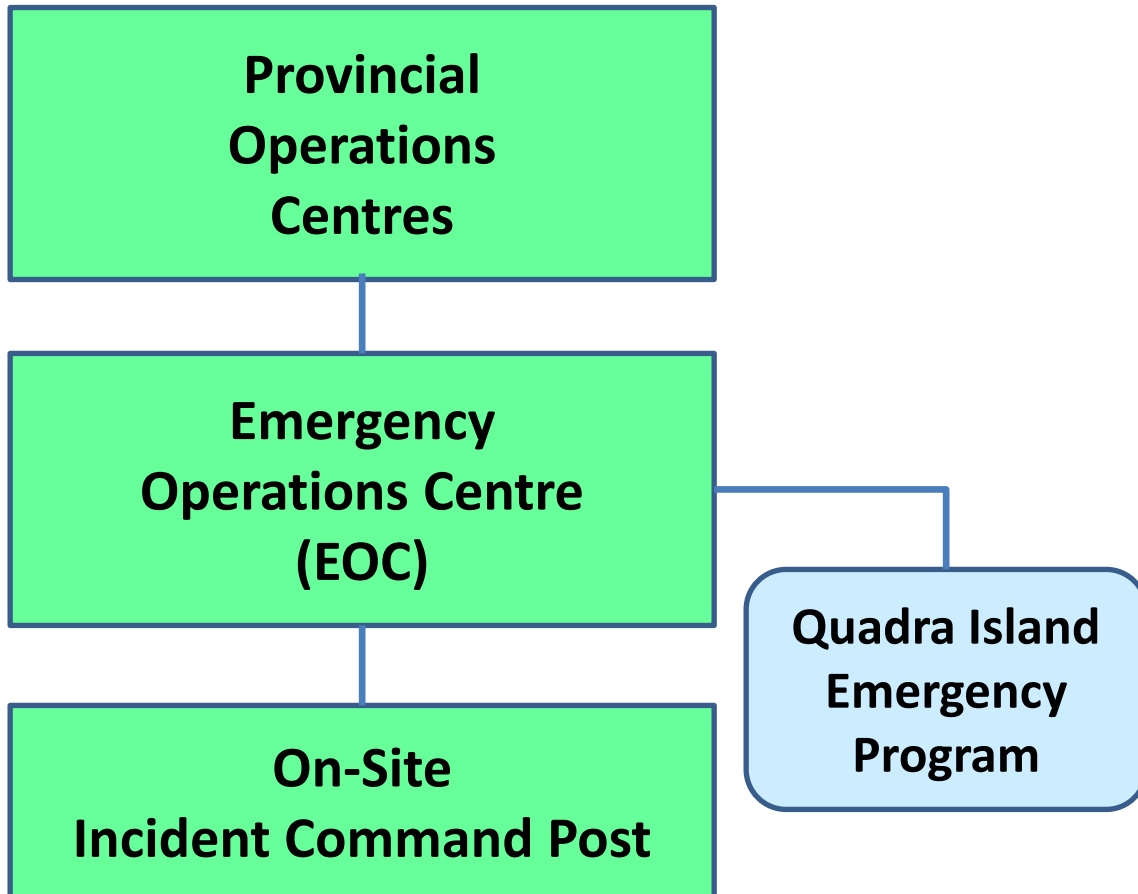


Emergency Management in BC

Emergency Management
BC (EMBC)

Local Authority
(Municipality or
Regional District)

- Fire Department
- Police
- BC Ambulance



Typical Emergency Operations Centre





Quadra Emergency Program

- Established under Strathcona Regional District

Quadra Island Emergency Program

Department Operations Centre (DOC)

Work with the Regional District and the Province to coordinate response to an emergency or disaster

Emergency Support Services (ESS)

Provide immediate support to persons forced from their homes by fire, floods, earthquakes, etc.

Neighbourhood Emergency Preparedness Program (NEPP)

Help individuals and neighbourhoods prepare for emergencies, and be more resilient in a disaster

Emergency Communications

Amateur (ham) radio operators, providing communications in the event of an emergency or disaster



Quadra Island Emergency Program

Current Membership

- Program started in 2007
 - Grew to 100 members within 3 years
- Current membership:
 - 94 ESS Volunteers (“Public Safety Lifeline Volunteers”)
 - 64 NEPP Representatives covering 33 neighbourhoods
 - 32 Ham Radio operators

Out of a population of about 2,700



ESS Reception Centre



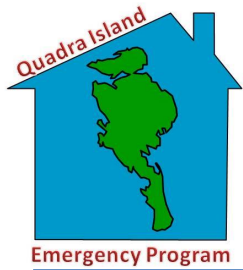
- Safe gathering place for people displaced or evacuated from their homes in an emergency
- Individuals can **register** and receive Emergency Support Services, and information about the emergency
- **Referrals** made for food, lodging, clothing, etc., based on need
 - Typically for 72 hour period



ESS Group Lodging

- Public facility adapted for dormitory-style emergency accommodation for large numbers of people



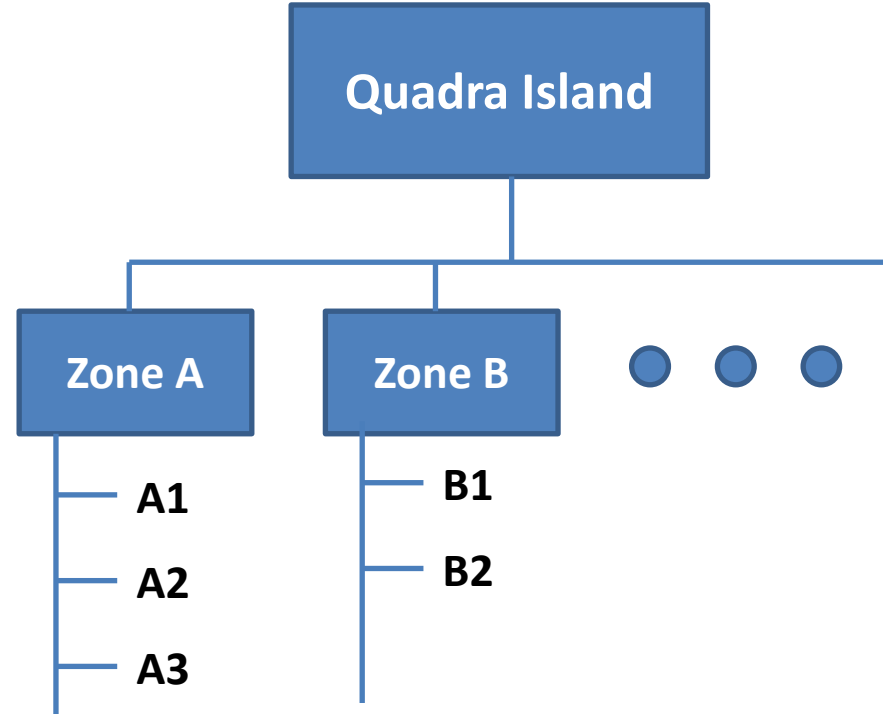
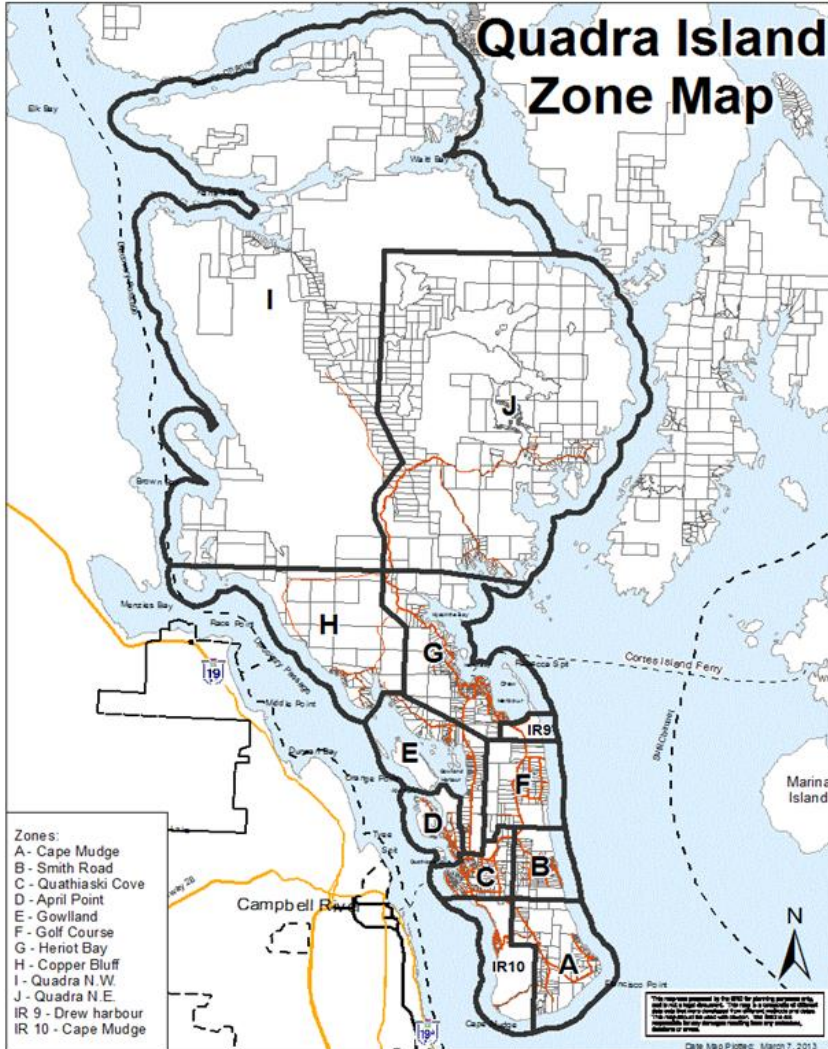


Neighbourhood Emergency Preparedness Program (NEPP)

- Promote individual preparedness
- Liaison between the Emergency Program and the neighbourhood
- Identify useful emergency resources in the neighbourhood (medical, communication, etc)
- Promote resiliency and self-sufficiency of the neighbourhood in an emergency



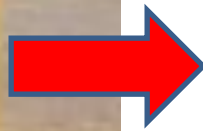
Quadra Zones & Neighbourhoods



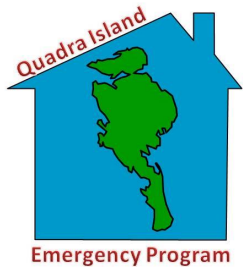
Should you stay or should you go?



Shelter-in-Place



Evacuation



Earthquake – Neighbourhood Meeting Point

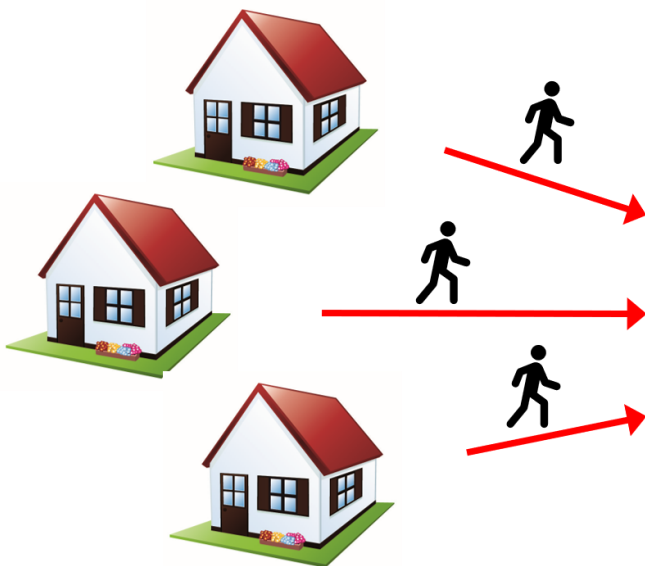
Look After Yourself

- Drop, Cover & Hold
- Check for injuries
- Secure household hazards
- Dress appropriately
- Check on your immediate neighbours if possible

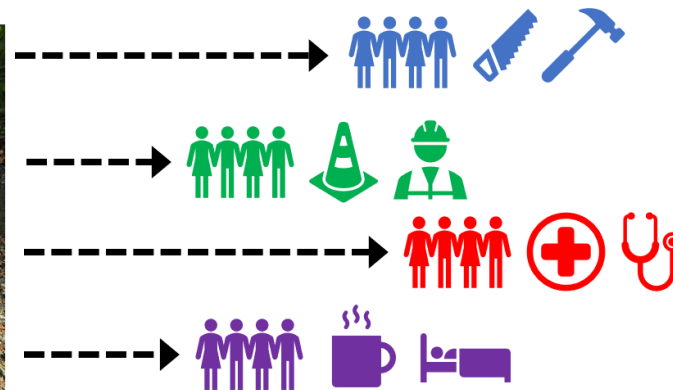
Go to the
Meeting
Point

Neighbourhood Response

- Account for Missing People
- Organize Resources
- Establish Communications
- Conduct Rapid Damage Assessment
- Fire Suppression and Utilities Safety
- First Aid
- Search and Rescue
- Shelter & Caregiving

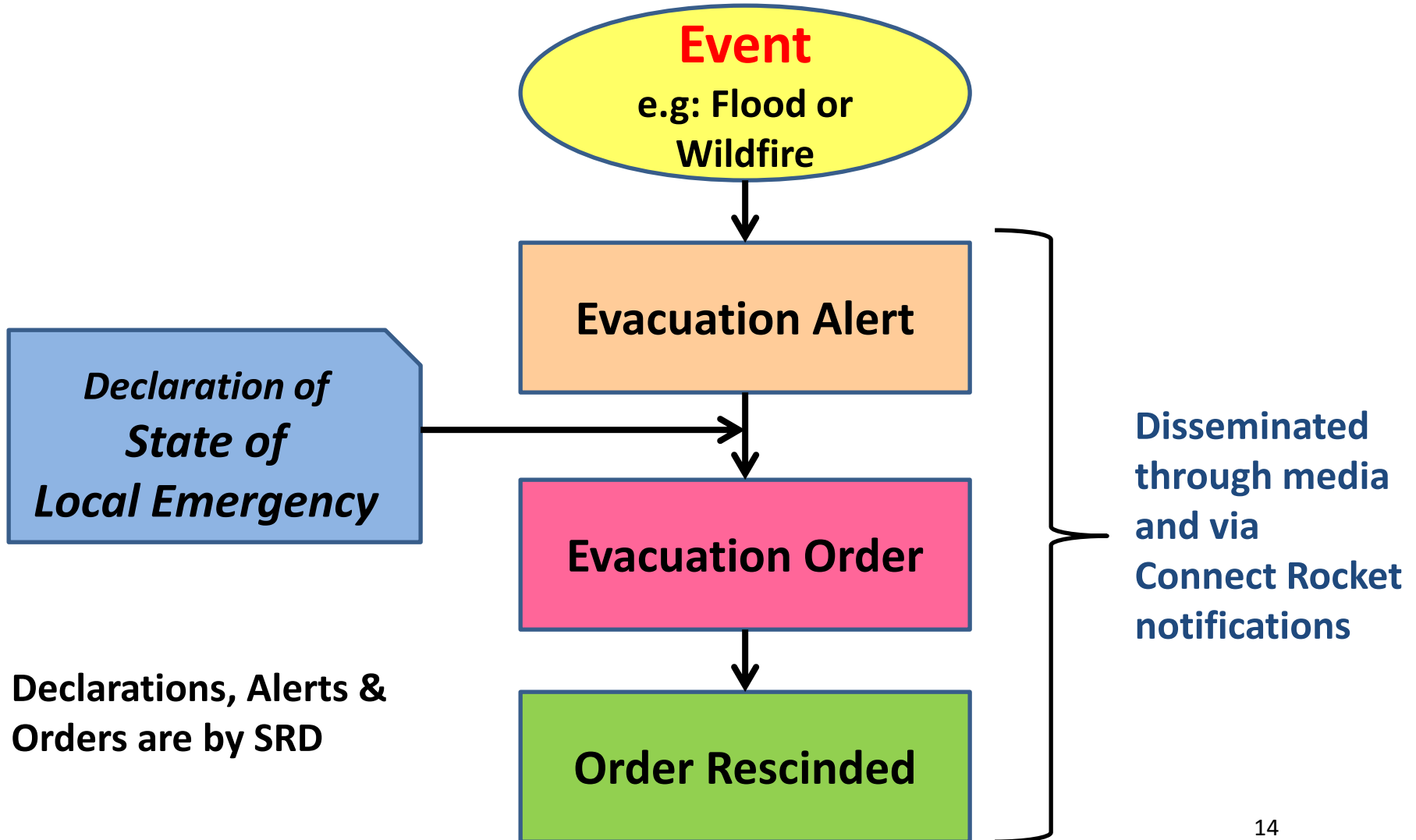


Neighbourhood
Meeting Point





Progression of an Evacuation





Quadra Island Wildfire Response Matrix

Phase	DOC	ESS	NEPP	Public
Pre-Alert				
Evacuation Alert				
Evacuation Order				
Evacuation Order Rescinded				



Expected actions & priorities

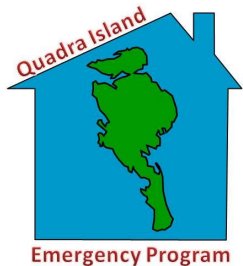


Growing your NEPP

Capability
Growth

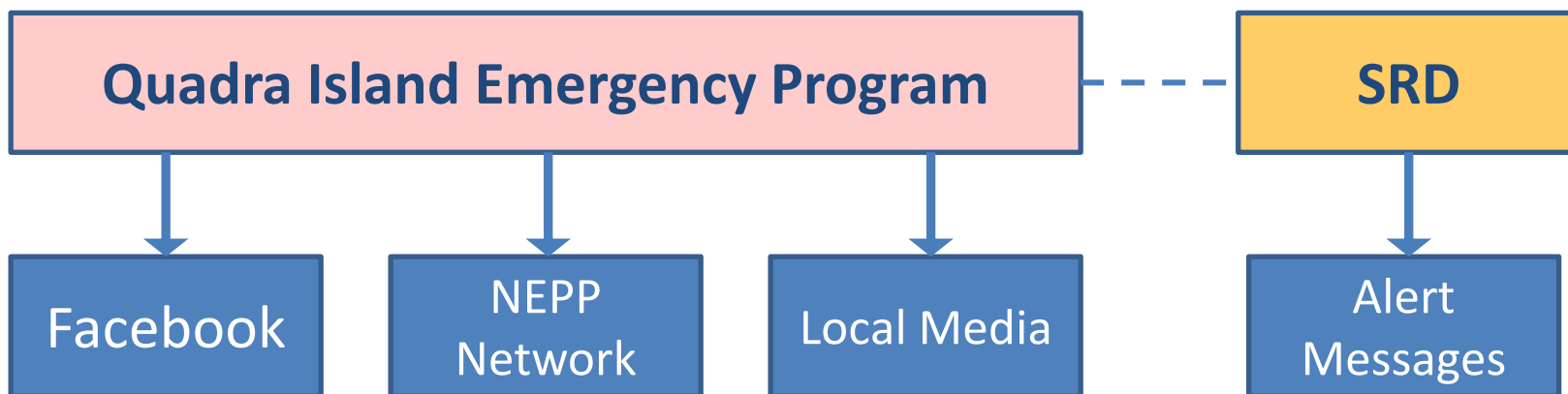


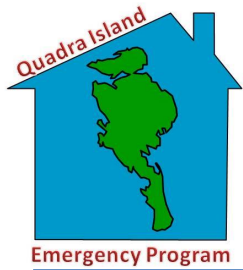
Geographic Growth
(more neighbourhoods)



Public Information Role

- Provide relevant, accurate info during an emergency
- Provide useful “non-emergency” information
 - Severe weather alerts, power outage, road closure information
 - Pandemic information





Collaboration and Other Initiatives

- ESS has supplier agreements in place with local businesses
- Membership in our local Chamber of Commerce
- Emergency Program volunteers can be found in every non-profit and community group on Quadra
- We are currently helping the Justice Institute of BC pilot an on-line *Community Disaster Resilience Planning (CDRP)* tool
 - Available: <https://cdrp.jibc.ca/>